



# MORTALITY

## Health Scrutiny Report Dec 2014

Dr Richard J M Morgan  
BTH Mortality Reduction Lead

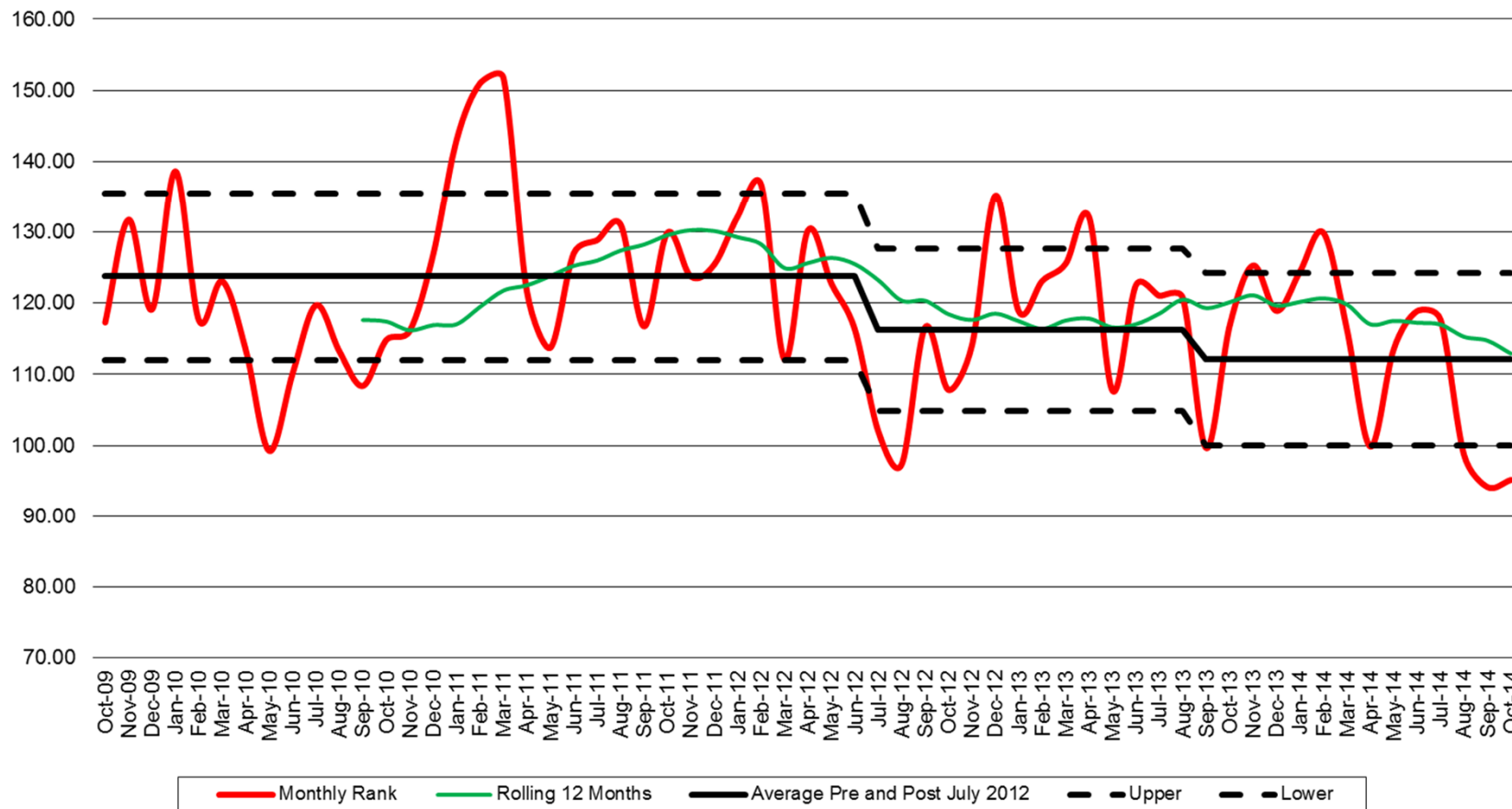


# Background

- Historically high mortality indicators
- Keogh Review 2013
- AQUA action plan
- Study of Avoidable Deaths (PRISM)
- Mortality Reduction Lead
- National Alerts
- Care Quality Commission Review 2014
- Latest National Mortality Recalculation



**SHMI Ranking By Month Using Internal SHMI methodology**  
(Please note latest months data will alter as deaths outside hospital are notified)





# Varying Mortality Indices

Three types produced nationally: SHMI, HSMR and RAMI

SHMI = Summary Hospital-level Mortality Indicator (Produced by DoH)

HSMR = Hospital Standardised Mortality Ratio (Produced by Dr Foster)

RAMI = Risk Adjusted Mortality Index (Produced by CHKS)

	SHMI	HSMR	RAMI
Deaths outside hospital	Yes	No	No
Adjusted for palliative care	No	Yes	Yes
Includes zero LoS emergencies	Yes	Yes	No
Comorbidity (Charlson Scores)	Partial	Full	Full
Uses procedures undertaken	No	No	Yes
Age Adjusted	21 Bands	19 Bands	6 Bands
Covers all deaths	100%	80%	86%
Excludes Day Cases	Yes	No	Yes
Includes Stillbirths	No	Yes	No
Only uses 1st two Episodes	Yes	Yes	No



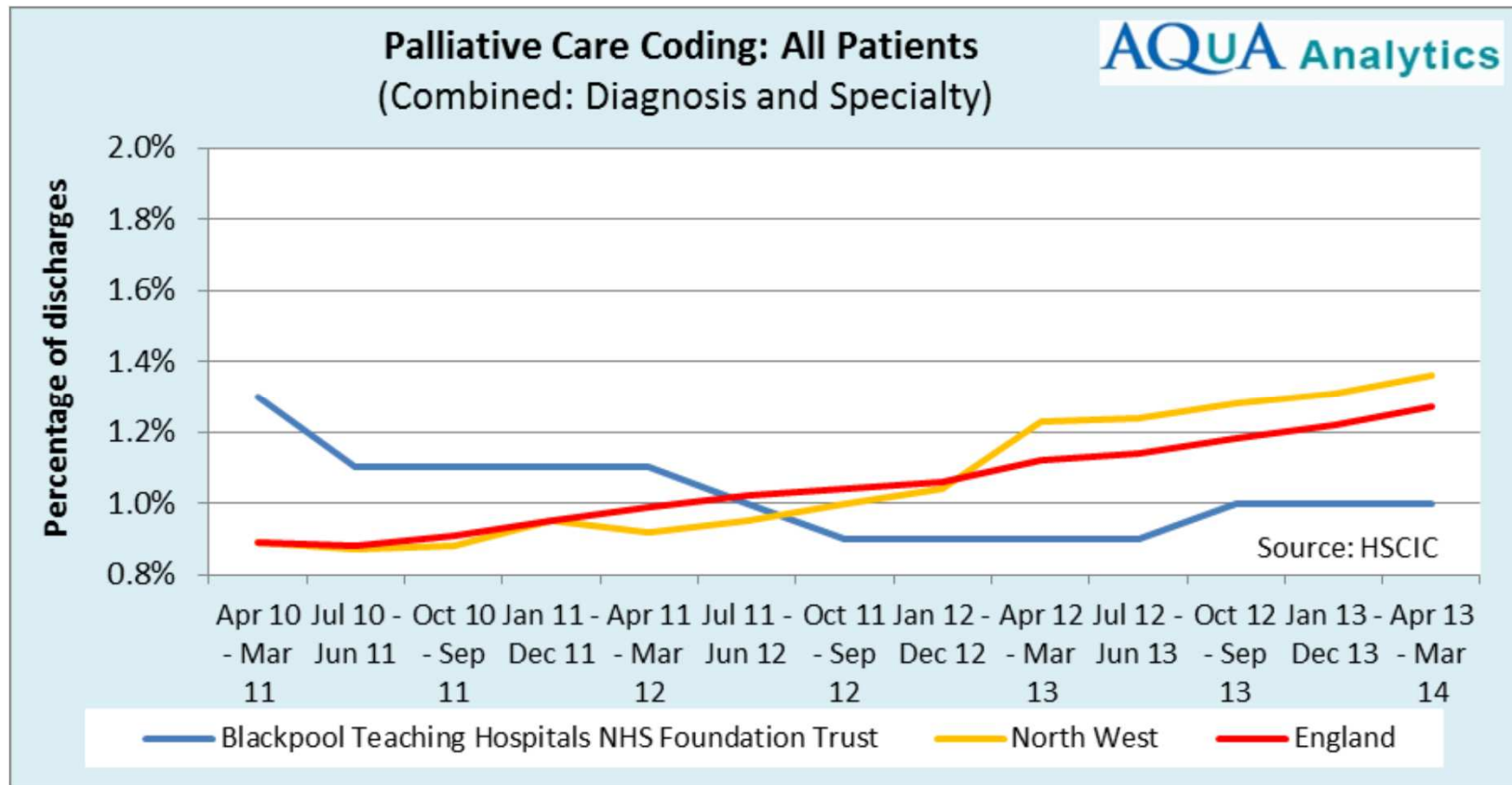
Blackpool Teaching Hospitals



NHS Foundation Trust

# Palliative Care Coding

(BTH National Outlier)



People Centred

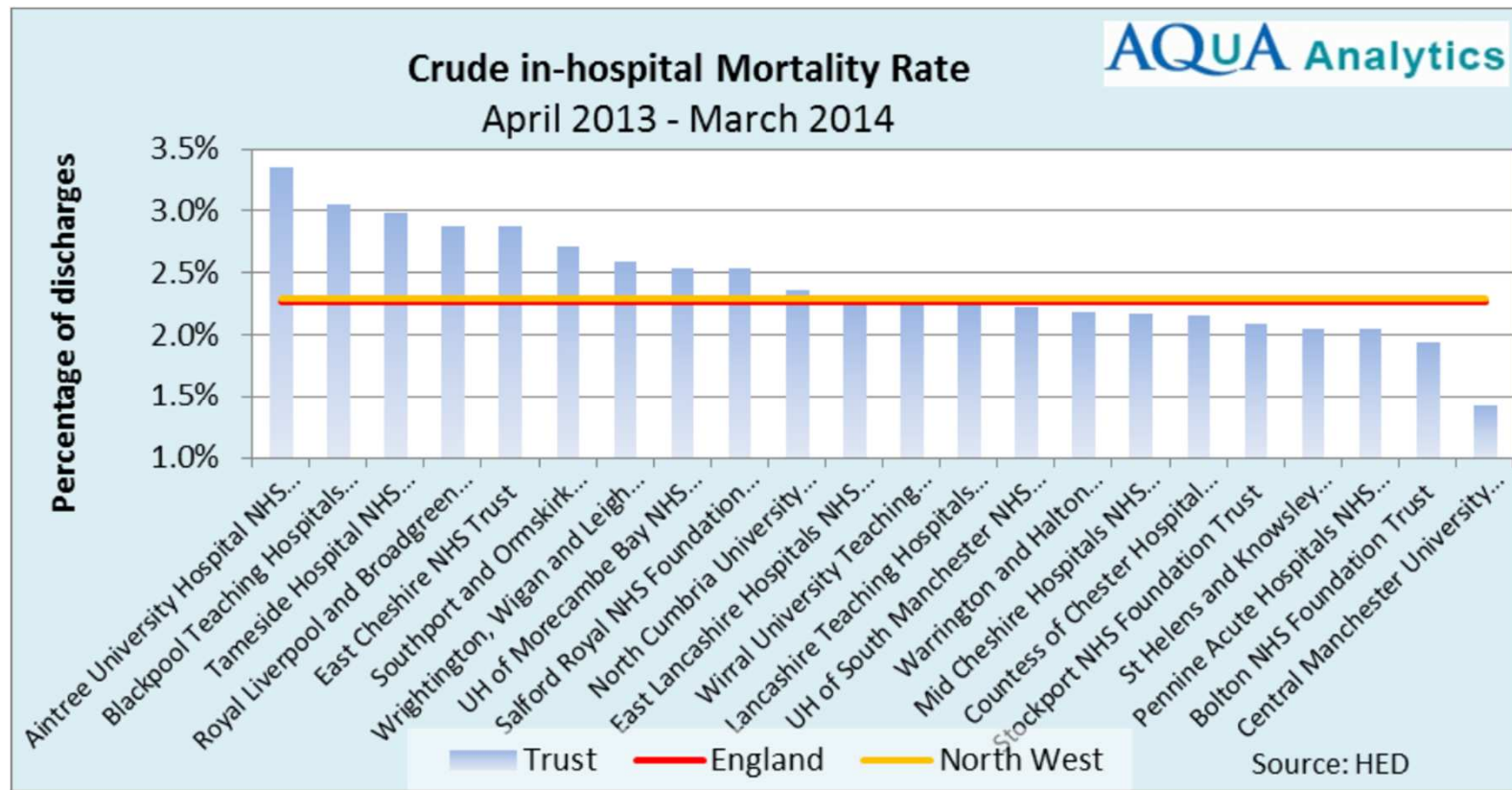
Positive

Compassion

Excellence



# Crude Mortality Rates



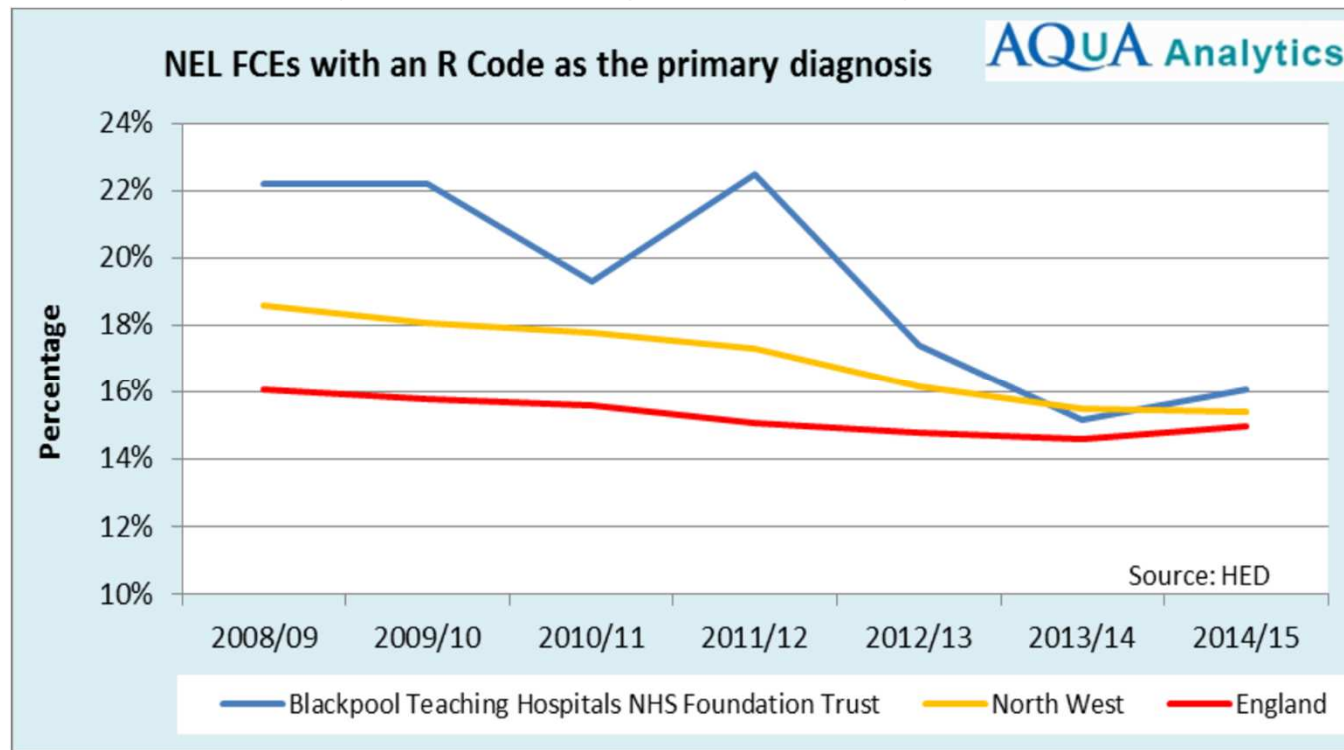


# Signs and Symptoms Coding

'R' Codes are non-definitive diagnosis codes

Recording of these codes in the primary diagnosis category adversely affects mortality risk

The Trust has improved coding dramatically





# Planned actions

- Mortality Committee
- Heatmaps
- Pathways
- Coding education
  - R codes
  - Common coding language
  - Palliative care
- AQUA Mortality Collaborative
- Informatics - relative rate of improvement
- Local Area Team Medical Director discussion
- Aintree/ Goole contact